

[www.lewitt-audio.com](http://www.lewitt-audio.com)



ADD  
MORE  
**POWER**  
TO  
YOUR  
**TUNES.**

MTP 340 CM/CMs

SOUNDS LIKE  **LEWITT**

Thank you that you have opted for a LEWITT product. In this operating manual you will learn more about your LEWITT microphone, its handling and its proper usage.

Music professionals know that when it comes to vocal and instrumental performances, details make an enormous difference to the listener's ears. Every emotion, every little variation and every nuance needs to be captured in order to make a great performance into a memorable one.

With our MTP series, we aim to exceed artists' and audio engineers' expectations of accurate reproduction and isolation of main sound sources, introducing professional-quality wired handheld dynamic and condenser microphones tuned specifically for authentic, crystal-clear reproduction of vocals and also well-suited for instrument applications.

Customized frequency responses, a rugged construction, high gain before feedback and extremely low handling noise make all models of the MTP series the perfect fit for any application, any performance and any setting.

LEWITT wishes you a lot of fun and success with this product!

Our MTP 340 CM and MTP 340 CMs are quality condenser vocal microphones with a technologically advanced back-electret capsule which brings a high level of sonic detail to demanding vocal applications. No matter whether on stage or in the studio, the models' tailored frequency response always allows for maximum precision and unsurpassed clarity, taking professional vocal tracking to the next level.

The ideal cardioid polar pattern ensures noise-free transmission, with essential sound sources being effectively isolated while unwanted feedback and background noise are eliminated. These microphones' rugged construction and the typical hardened steel-mesh grille ensure trouble-free performance for years.



MTP 340 CM

MTP 340 CMs

## Features

- Uniform cardioid pickup pattern for effective isolation of the intended sound source and minimal background noise
- Minimally affected by varying load impedance
- Frequency response optimized for demanding vocal applications
- MTP 340 CMs features convenient recessed on/off slide switch
- Gold-plated 3-pin XLR output connector
- Abuse-resistant steel-mesh grille and solid die-cast body
- Comes in a cardboard box including MTP 40 MCs shock mount and DTP 40 Lb leather bag

## Top applications

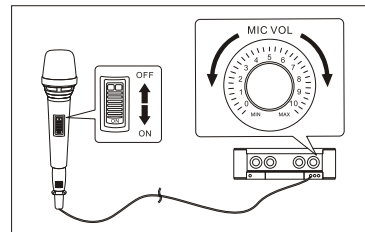
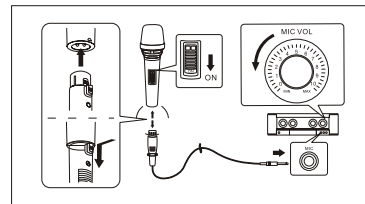
- Vocals
- Live applications
- Recording

### Connecting and Disconnecting the Microphone Cable

- Before establishing connection, make sure that the microphone and the component (e.g. amplifier) are switched off.
- Lower the volume of the component (e.g. amplifier) before connecting the microphone.
- Insert the connector into the microphone socket. Align the key on the connector with the groove in the microphone, and then push the connector into the microphone until it clicks.
- To disconnect the cable from the microphone, pull the connector away from the microphone while depressing the latch lock.

### How to Use

- Set the switch to ON when using the microphone, set it to OFF when it is not in use (only applicable if your microphone has an ON/OFF switch).
- When using the microphone, do not cover any part of the grille with your hand to ensure best sound quality and accurate directivity characteristic.

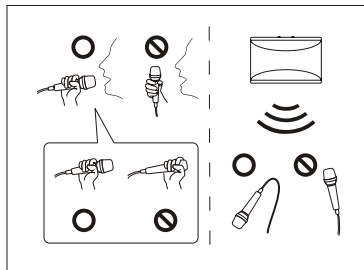


### Hints

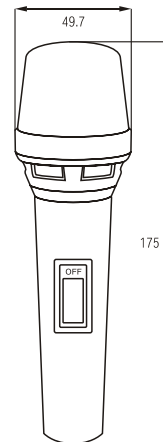
1. In order to prevent feedback (howling):

- Lower the volume.
- Place the microphone so that it is not pointed to the speaker and that there is a sufficient distance between the microphone and the speaker.
- Do not cover the lower part of the grille with your hand.

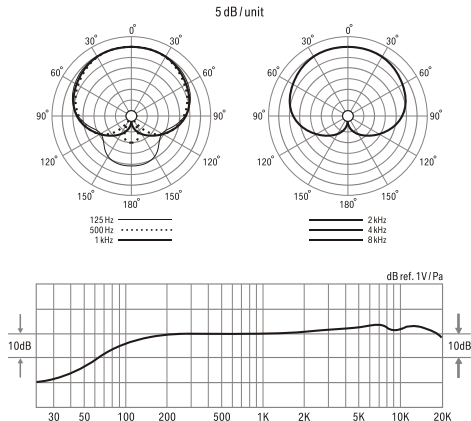
2. Positioning the microphone close to the sound source causes the so-called proximity effect (a boost in the low frequency response). This phenomenon can be used to create a richer and warmer bass sound.



### Dimension



## Tech graph



## Tech data

- Acoustical operating principle: pressure gradient transducer, permanently polarized
- Directional pattern: cardioid
- Frequency range: 90 ... 20,000 Hz
- Sensitivity: 3.1 mV / Pa (-50 dBV)
- Equivalent noise level: 25 dB-A (IEC 61672-1)
- Maximum SPL: 141 dB, 1% THD  
150 dB, 3% THD
- Rated impedance: < 200 ohms
- Rated load impedance: > 1,000 ohms
- Supply voltage: 48 V +/- 4 V (IEC 61938)
- Current consumption: 5.3 mA (IEC 61938)
- Connector: gold plated 3-pin XLR
- Dimension: 49 dia. x 175 mm  
1.9 dia. x 6.9 inch
- Net weight: 330 g  
11.6 oz.

## Accessories



MTP 40 MCs



DTP 40 Lb





## Cautions

- The capsule is a sensitive, high precision component. Make sure you do not drop it from high heights and avoid strong mechanical stress and force.
- To ensure high sensitivity and best sound reproduction of the microphone, avoid exposing it to moisture, dust or extreme temperatures.
- Keep this product out of the reach of children.
- Do not use force on the switch or cable of the microphone.
- When disconnecting the microphone cable, grasp the connector and do not pull the cable.
- Do not attempt to modify or fix it. Contact qualified service personnel in case any service is needed. Please do not disassemble or modify the microphone for any reasons as this will void users warranty.
- The casing of the microphone can be cleaned easily using a wet cloth, never use alcohol or another solvent for cleaning. If necessary the foam wind stopper can be washed with soap water. Please wait till it is dry before using it again.
- Also please refer to the owner's manual of the component to be connected to the microphone.

## Warranty

All products manufactured by LEWITT GmbH feature a limited two-year warranty. This two-year warranty is specific to the date of purchase as shown on your purchase receipt.

LEWITT GmbH shall satisfy the warranty obligations by remedying any material or manufacturing faults free of charge at LEWITT's discretion either by repair or by exchanging individual parts or the entire appliance. Any defective parts removed from a product during the course of a warranty claim shall become the property of LEWITT GmbH.

While under warranty period, defective products may be returned to the authorized LEWITT dealer together with original proof of purchase. To avoid any damages in transit, please use the original packaging if available. Please do not send your product to LEWITT GmbH directly as it will not be serviced. Freight charges have to be covered by the owner of the product.

Certain products manufactured by LEWITT GmbH feature a limited five-year warranty. For this five-year warranty the same conditions as listed for the two-year warranty are applicable.

For further information please visit [www.lewitt-audio.com](http://www.lewitt-audio.com) or check your warranty card.



LEWITT GmbH declares under its sole responsibility that MTP 340 CM/CMs complies with the European directive 2004/108/EC. The product has been tested according to harmonized European standards:

EN 55013:2001+A1:2003+A2:2006

EN 55020:2007

EN 61000-3-2:2006

EN 61000-3-3:1995+A1:2001+A2:2005

Product testing was carried out by TIMCO Engineering Inc., notified body number 1177.

LEWITT GmbH hereby declares under its sole responsibility that MTP 340 CM/CMs has been tested and conforms to the following FCC and ANSI standards:

FCC Part 15:2008 Section 15.109

ANSI C63.4:2003

Product testing was carried out by INTERTEK Testing Services Shenzhen Ltd.



WEEE note: Electronic waste has to be collected separately. Please bring this device to a local recycling center at the end of its life time.

Manufacturers signature:

Date: 18th November 2010

Place: Vienna, AUSTRIA

DI Roman Perschon

CEO – Lewitt GmbH

Declaration of conformity can be downloaded at [www.lewitt-audio.com](http://www.lewitt-audio.com) or obtained from [info@lewitt-audio.com](mailto:info@lewitt-audio.com).

Mooslackengasse 17  
1190 Vienna  
AUSTRIA  
[info@lewitt-audio.com](mailto:info@lewitt-audio.com)





**LEWITT**